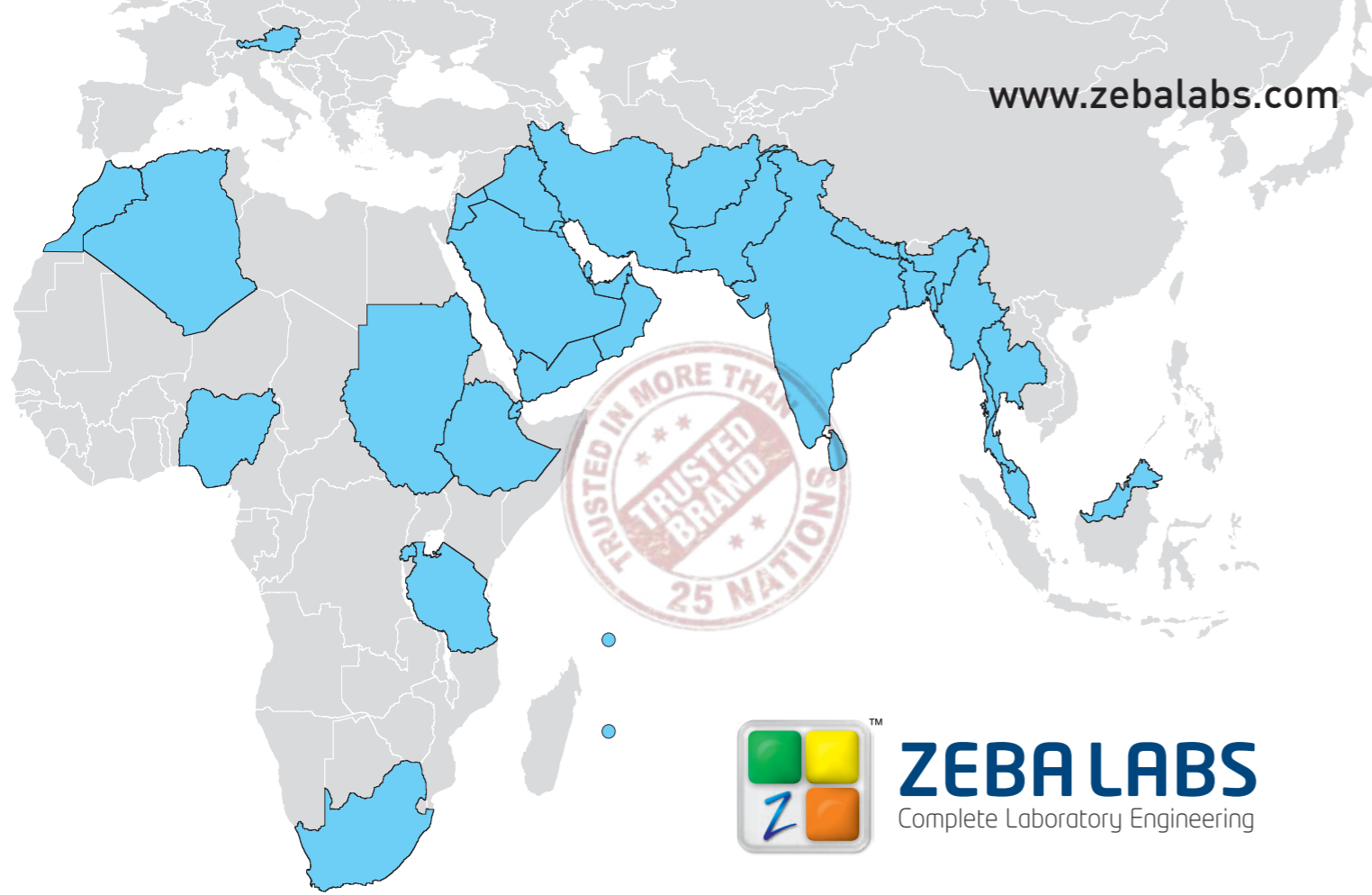


www.zebalabs.com

www.zebalabs.com



**ZEBALABS**  
Complete Laboratory Engineering



Cochin  
P.O. Box:3130, Kakkanad, Cochin-30  
Tel.: +91 484 2415112, Mob.:+91 989 515 8222  
Email: contact@zebalabs.com

Trivandrum  
1st Floor, Amina Building, Vetturoad Junction, Kaniyapuram  
Trivandrum-695 301, Mob.: +91 956 703 2000  
Email: sajeena@zebalabs.com

Palakkad  
XIII/615, Wise Park, NIDA, Kanjicode P.O.  
Palakkad- 678 621, Tel.: +91 491 3244300, 2569070  
Email: zls@zebalabs.com

GCC Marketing Support  
P.O. Box. 23437, Sharjah  
Tel.: +971 6 532 1041, Mob: +971 50 625 3861  
E-mail: zebakemirates@zebalabs.com

P.O.Box: 9059, Doha, Qatar.  
Tel.: +9744 4311288 Mob.:+974 5 552 7199  
Email: kajabbar@qatar.net.qa, Contact: Mr. Abdul Jabbar

P.O. Box: 268, PC: 117, Wadi Kabir, Muscat  
Sultanate Of Oman, Mob.: +968 9980 4388/ 9943 5079  
Tel.: +968 248 15589, E-mail: gulfline@omantel.net.om  
Contact: Mr.. R.K. Jose

Building No. 01284, Road 5136, Askar 951, Bahrain  
Tel.: +973 1783 2225, Mob.: +973 39334612,  
E-mail: akq\_cis@batelco.com.bh, Contact: Mr. Babu. R. Menon

10, Ijaiye Road, First Gate Bus Stop, Ogba, Lagos.  
Tel: +234 816 279 3185, Mob.: +234 807 394 0460  
Contact: Mr. Folorunsho Daniel



**Kuwait**

P.O. Box 4148, Safat, Kuwait  
Tel.: +965 2243 7670 / 2242 8730 / 2244 6832,  
Mobile: +965 9 760 1637, E-mail: contact@burganequip.com  
Contact: Mr. Ajith Kumar



**Sudan**

Mob.: +249 9121 72205, E-mail: azeem@zebalabs.com,  
Contact: Mr. Abdulazem Abdalla Karar



**Mauritius**

19, Poivre Street, Port Louis, Mauritius  
Tel.: +230 2027 700, Mob.: +230 728 8112  
E-mail: laboratory@ducray-lenoir.com, Contact: Mr. Laval Seedoo



**Nepal**

Ward No.11,Babbarmahal, Opp.Tax Office., Kathmandu  
Nepal, Mobile: +977 980 204 4440, Tel.: +977 1 424 5342  
Email: nikunj@parthinternational.org , Contact: Mr. Nikunj Agarwal



**Myanmar**

No. 33(B), Dagon Township, Yangon  
Tel. (01) 221347, Fax. (01) 216400  
E-mail: enquiry@nanovapteltd.com,Contact: Dr. Thiha Nyunt



**Sri Lanka**

Ground Floor, Hemas Building, P O Box 1945  
No.36,Bristol Street, Colombo 01, Tel : +94 11 2323308, 2327948  
Mob.: +94 777 351321, E-mail:- hemaslab@slt.lk  
Contact: Mr. Amir Esufally



**Thailand**

111/2 M00.3 T. Chakbok, A. Bankai, Rayong 21120  
Tel: 038 646 7124, Mob.: +66 897 794 668  
E-mail:zebathai@zebalabs.com  
Contact Person: Mr.Prasad



Peace of mind  
& Pride of ownership



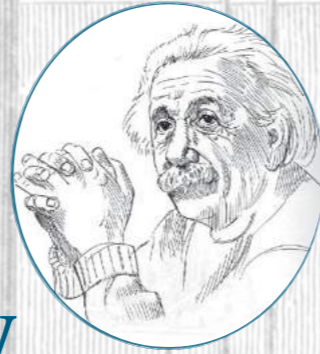
**ZEBALABS**  
Complete Laboratory Engineering





my mind is  
my laboratory

- Albert Einstein



## Vision

To be the most sought-after provider of  
Peace of mind & Pride of ownership  
in the field of Laboratory furnishing.

## Mission

We value the trust of our customers.  
We commit to provide  
Peace of mind & Pride of ownership  
without any geographical boundaries by  
delivering high quality products and  
services. We strive to achieve it by  
improved designs, innovative  
technology and inspired man-power.



**ZEBALABS**  
Complete Laboratory Engineering

## Index

4	Introduction
6	About Zeba Labs
7	Field of Services
8	Workbenches
9	Island Benches
10	Wall Benches
11	Peninsular Benches
12	Prima Series
14	Vigor Series
16	Flexi Series
18	Fume Containments
20	Fume Cupboards
22	Walk-in Fume Cupboards
23	Floor level Fume Containment
24	Canopy Hood
25	Suction arm
26	Worktops
28	Sinks & Dripcups
30	Blower & Filters
31	Service Fittings
32	Safety Fittings
34	Anti-vibration table
35	Storage Systems
38	Chemical Storage
40	Library furniture
42	Special Furniture
43	Beverages Rack
44	Science Lab Mobile Bench
45	Reagent Rack
46	Accessories
47	Seating & Trolleys
48	Gasoline
49	Educational Lab
50	Planning, Designing, Execution
52	Clean Room
53	Interior Paneling
54	Mobile Laboratory
56	Gallery
71	Technology Partners





A good workplace contributes to the quality and accuracy of the output. Clean and user friendly arrangements in a laboratory with necessary safety precautions are exigent to ensure efficiency and safety.



With the advancement of technology and science, the procedures in laboratory are much more complex than ever before. With a rightly designed fit-outs and specific equipments, the demands can be met at ease.

We, Team Zeba, provides complete solution for all your laboratory Engineering needs

We have specific solutions for every type of laboratories. The facilities are designed based on the application, availability of area, number of occupants, safety standards and also to suit the budgets.

Our experienced designers, with the use of state-of- the art software, can support in planning your most sought-after work place, where you brew your success.

Our uncompromising quality control, that starts right from the sourcing of raw materials which continues throughout our processes adds delight to our customers, who is the part of our proud clientele.

Our dedicated production team adopts modern techniques using latest precision machinery and committed to deliver world class products from our factory. Our commitment to customers persist even after the products leave our factory.

Our team of experienced technicians have won tonnes of appreciation from our customers for the professionalism and hassle-free installation of the project.

All our products carry a warranty for materials and workmanship.





# the complete lab furniture

At Zeba, Research and Development is a continuous process. Our ISO 9001:2008 certified quality management system along with the practice of Total Quality Management (TQM) ensures smooth flow of the projects, right from the beginning, to the completion of the project and also to our after sales service.

Appreciation from our delighted customer towards our proven quality of products and services are the most important award for us.

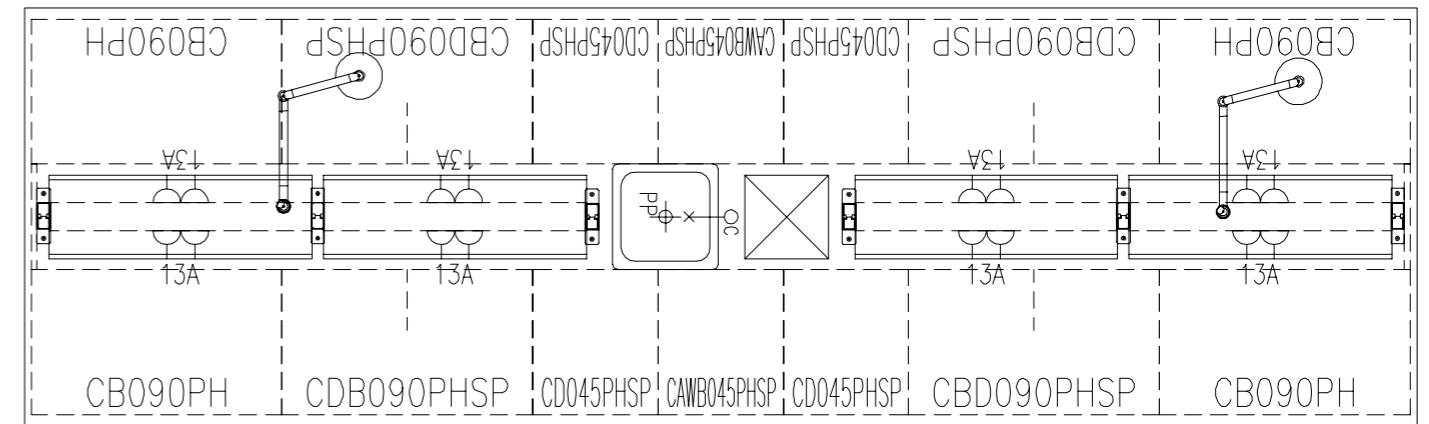


## We are specialized in designing and commissioning of laboratories for various disciplines such as

- Agricultural
- Archaeology
- Aviation and Space science
- Bio-technology, Pharma & Cosmetics
- Cement and concrete
- Container & mobile laboratories
- Educational institutions
- Fisheries
- Food & beverages
- Forensic science
- Hospital and health care
- Micro biology
- Paint and coatings
- Petroleum & oil
- Poly - Film industries
- Research labs
- Robotics
- Testing services
- Textiles and garments
- Treatment plants
- Veterinary





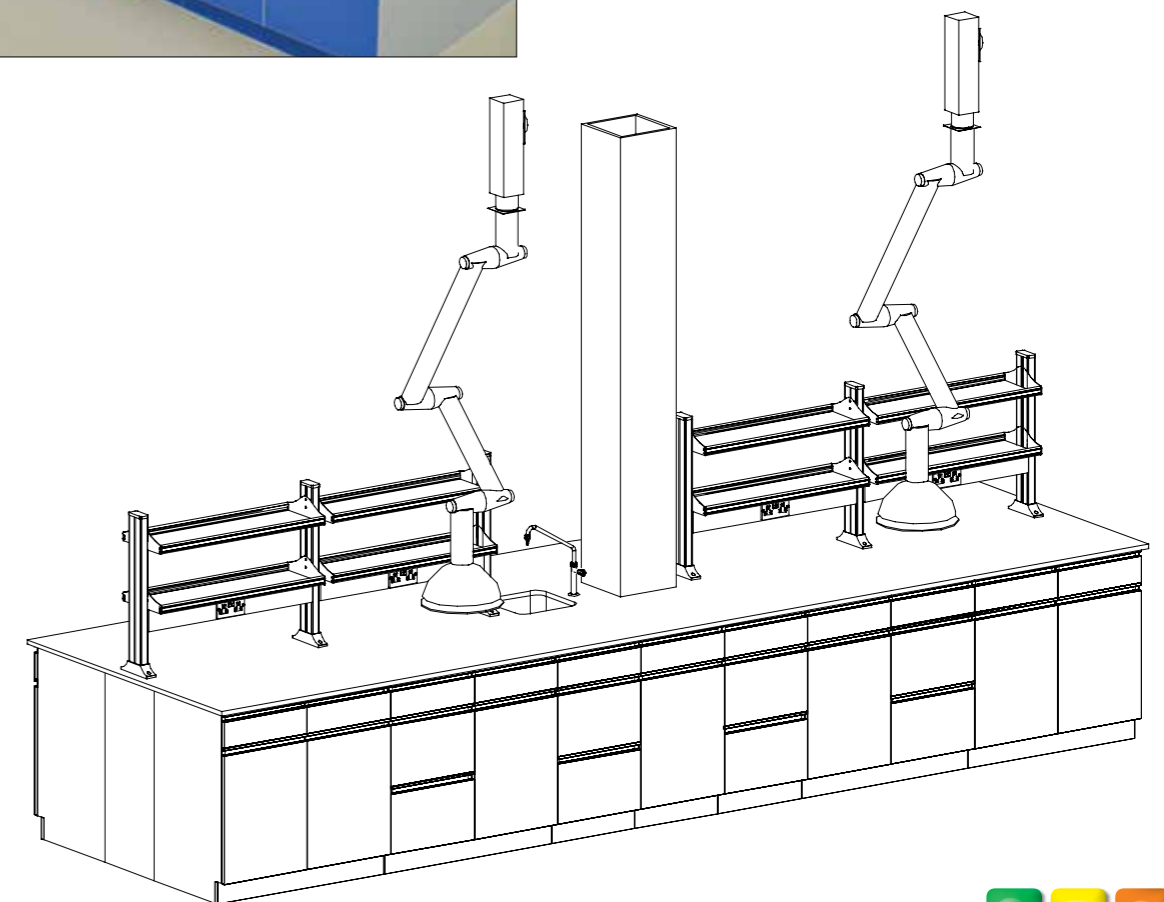


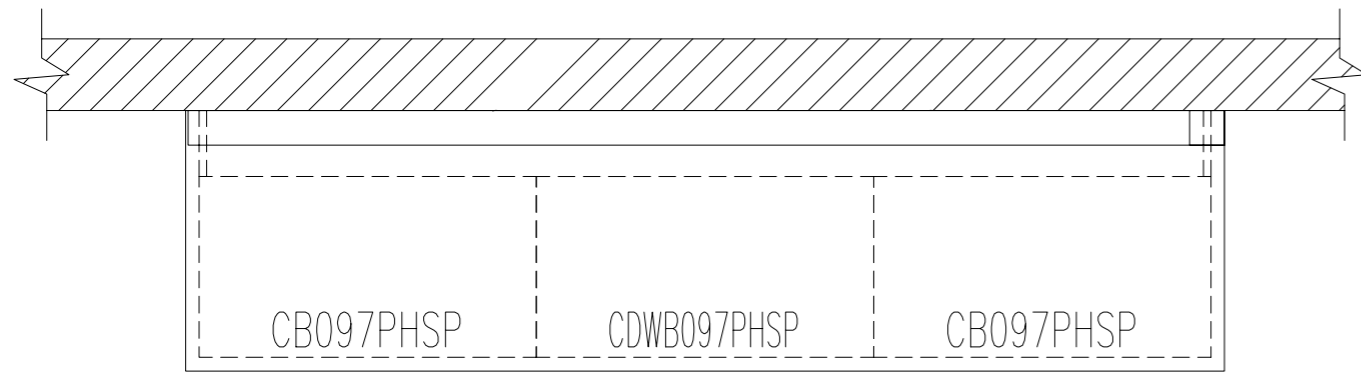
**Island Bench**

Free standing workbenches are placed away from wall to utilize the space effectively. It has accessibility from all four sides. Services needs to be brought from the floor or dropped from the ceiling.

**Workbenches**

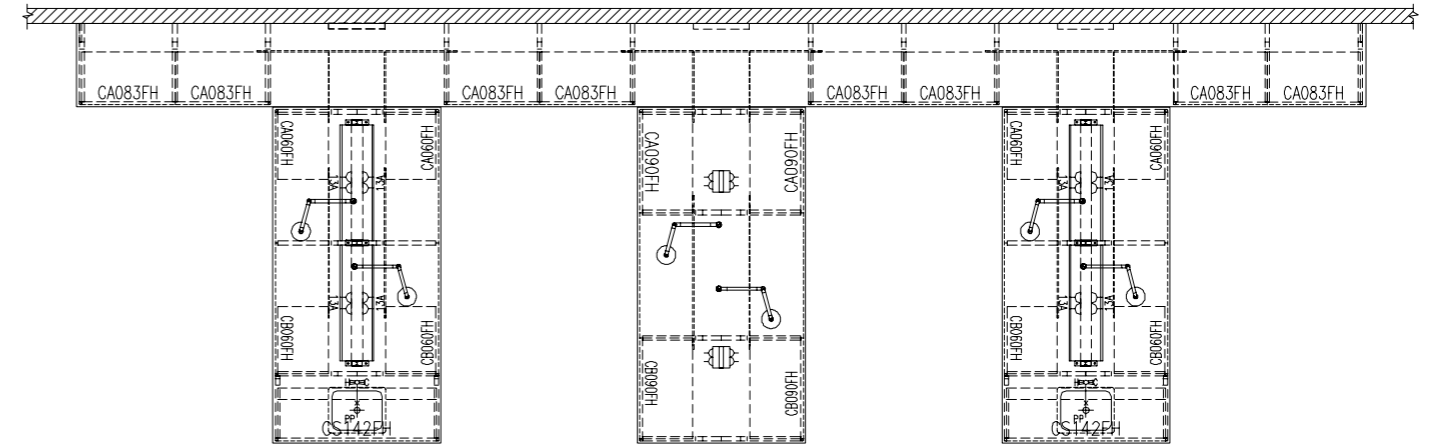
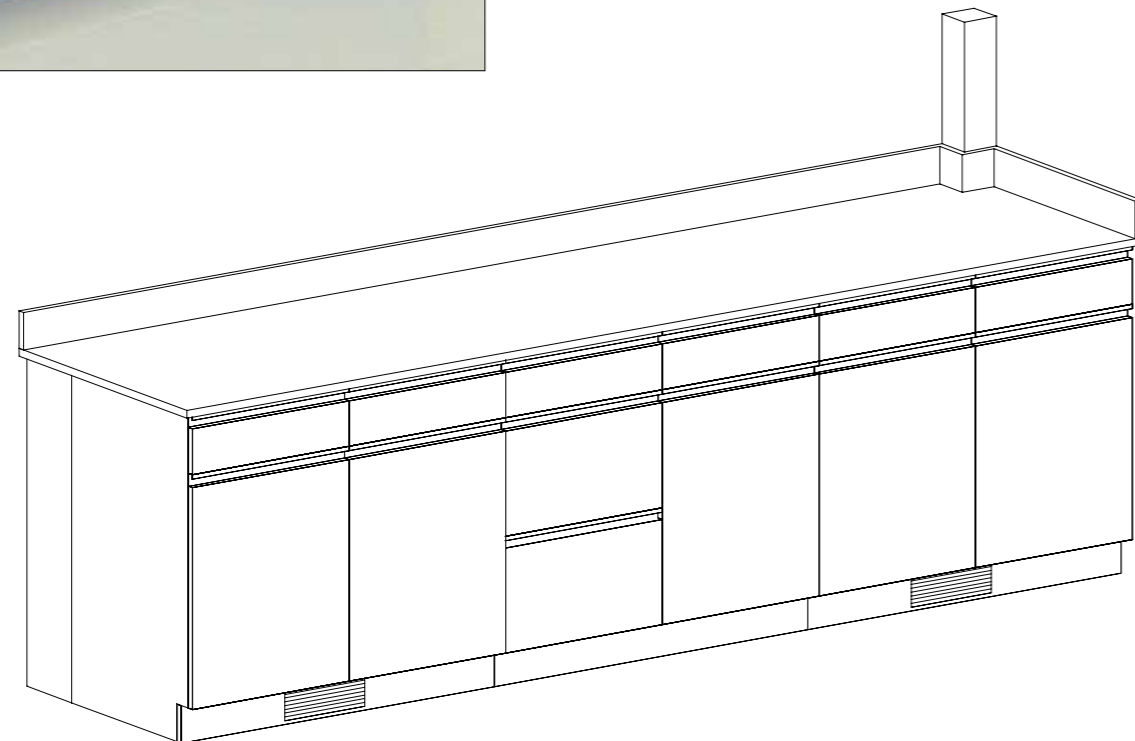
Workbenches can be constructed in different configurations. The furnishing systems are selected considering the nature of the laboratory, space and storage requirements, number of users, sitting and standing space, degree of flexibility and budget.





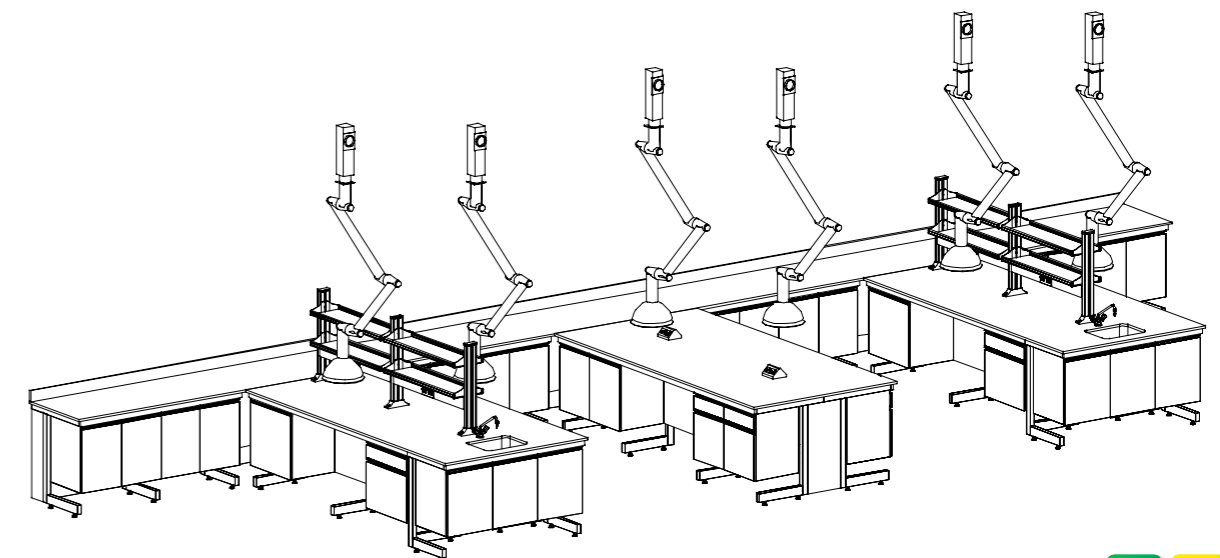
**Wall Bench**

Always installed in contact with the wall. Services can be provided either on the wall or on the workbenches.

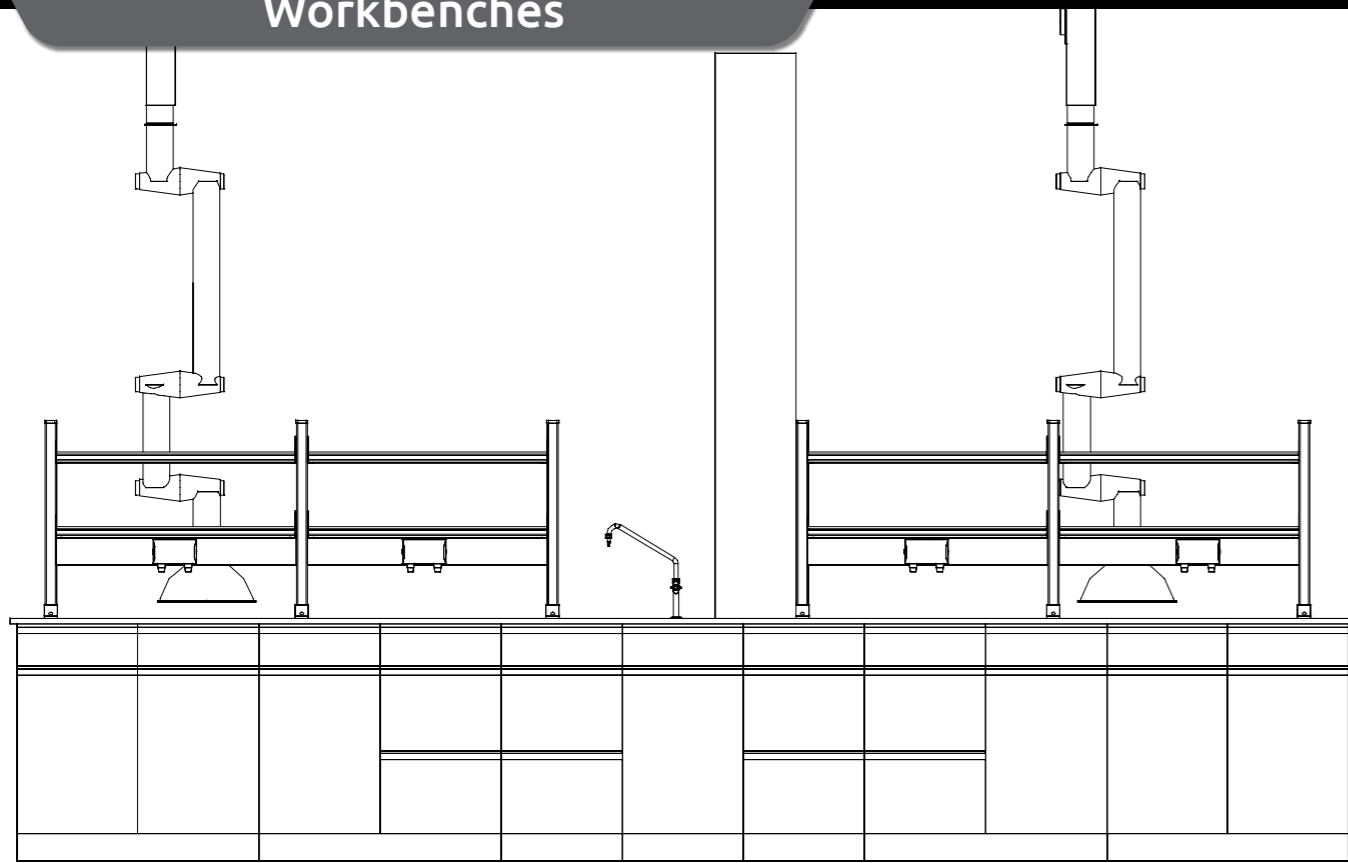


**Peninsular Bench**

A combination of Wall Bench and Island Bench. One side is close to the wall and is accessible from all three sides. Services can be brought out from wall, floor or from the ceiling.



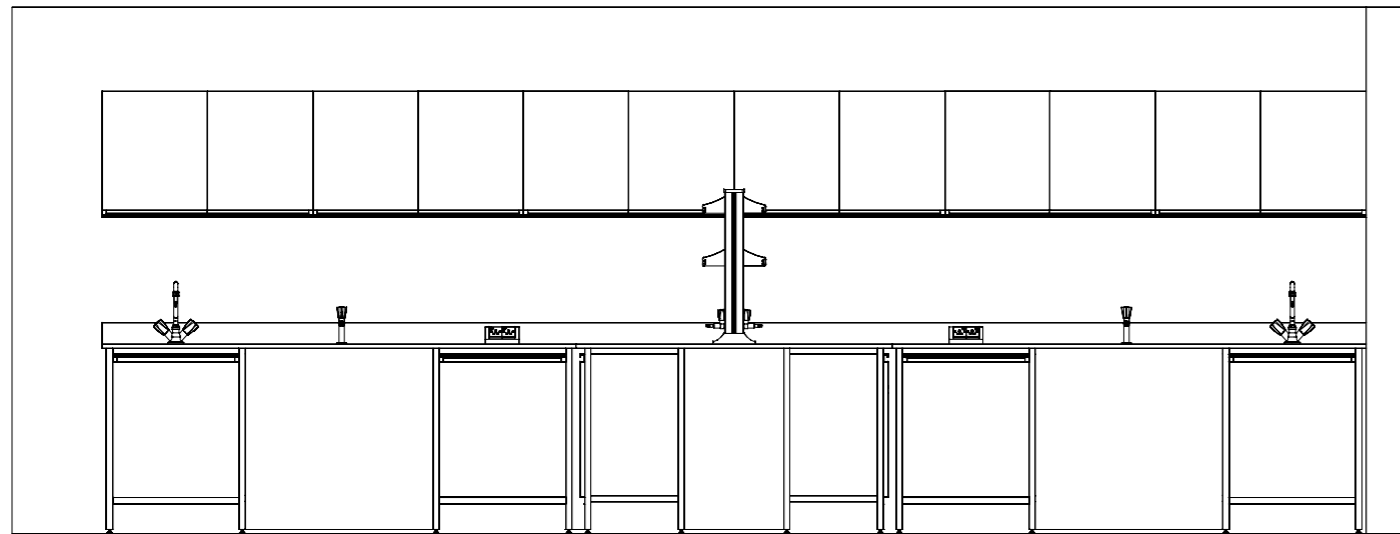
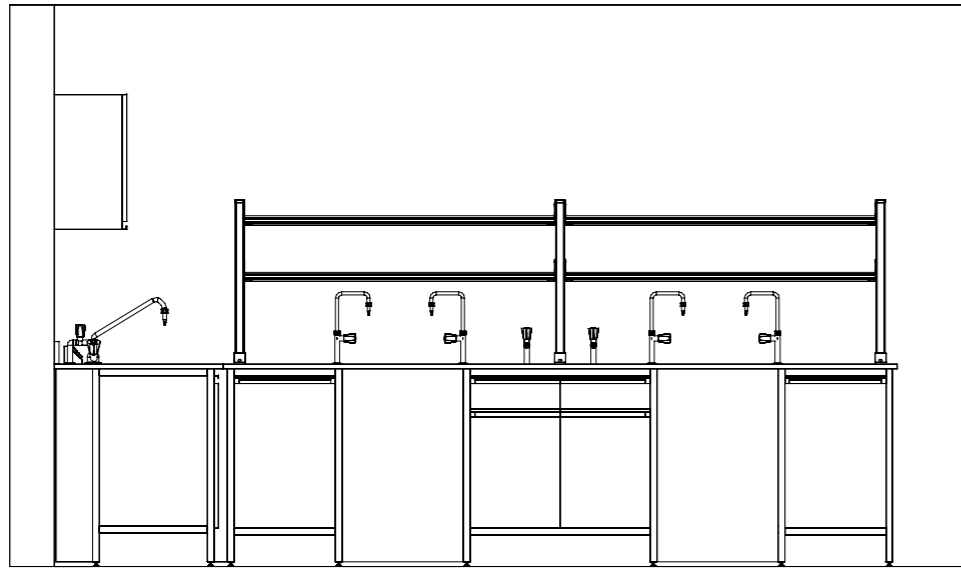




### Prima Series

The worktops are installed on under-bench cabinets or panels. The cabinets are constructed with an integrated plinth of 100 mm to keep the cabinet bottom elevated from the floor. The cabinet rests on the floor without any additional support of frame work.



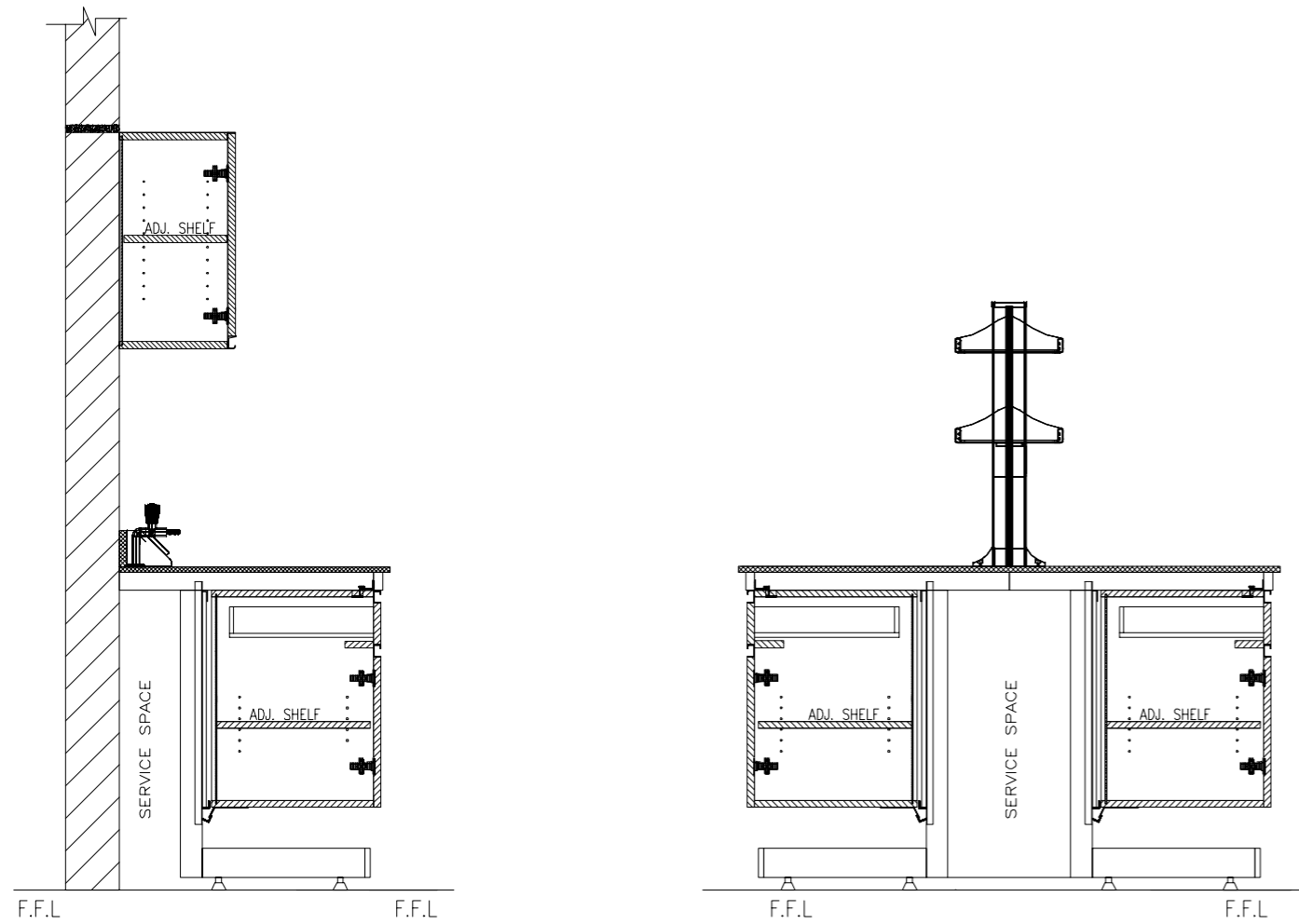


### Vigor Series

Vigor Series - Designed to support heavier loads. Work tops are placed on metal frame works. The 'H' frames are made from mild steel square sections. Under bench cabinets rests on frames.







### Flexi Series

Worktops are mounted on heavy duty cantilever metal frame.

Suspended cabinets or mobile cabinets shall be used with this system. Thus, under-bench spaces can be organized by the user to adapt their needs easily without the help of a technician. Ease of access to the service area is a special advantage of this series.





“I never did anything by accident,  
nor did any of my inventions come by accident;  
they came by work.”

-Thomas A. Edison



Fume Containment  
& Extraction Systems



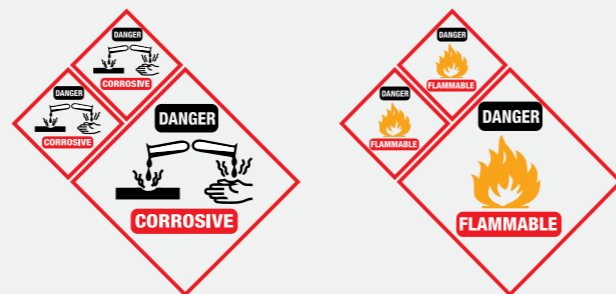
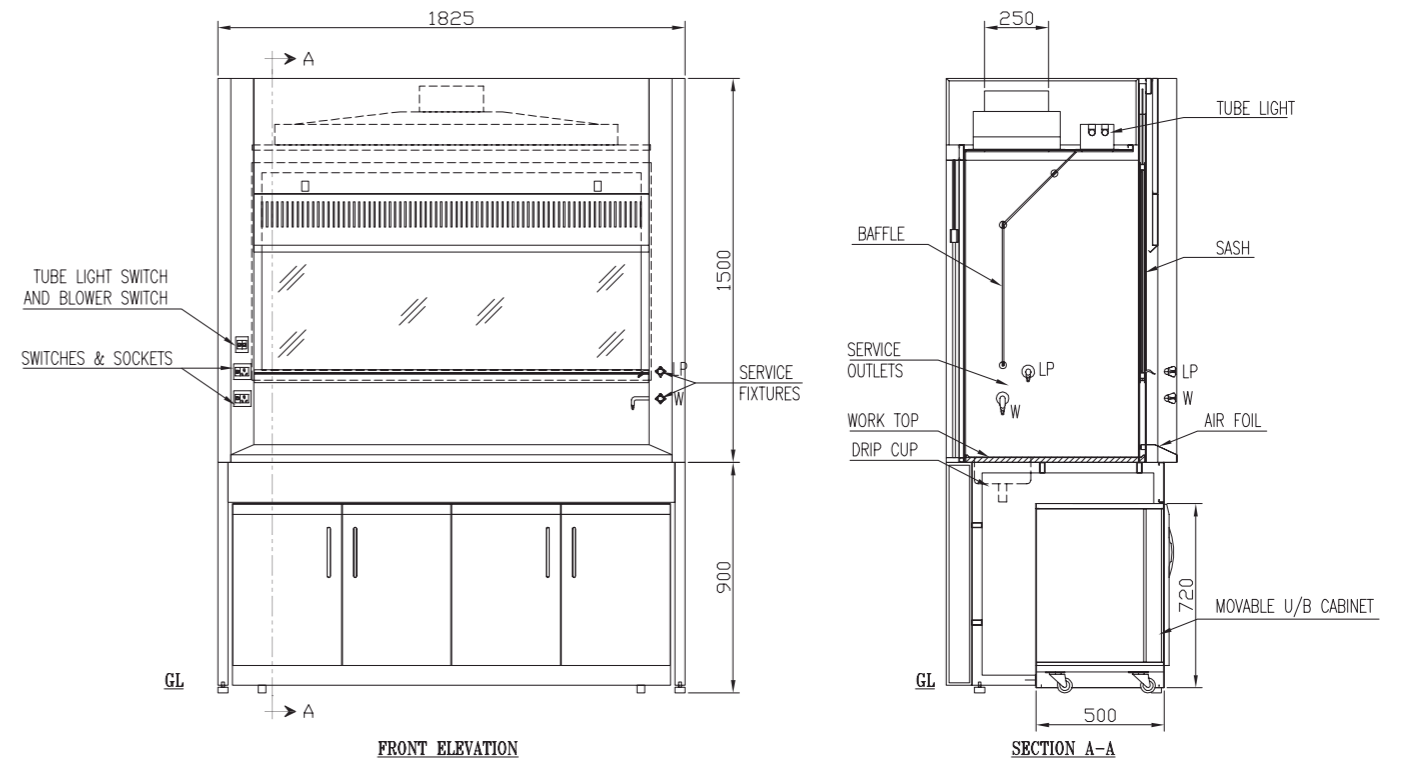




degis

**Standard Sizes**

1225, 1525, 1825 mm.  
Custom sizes are also available.

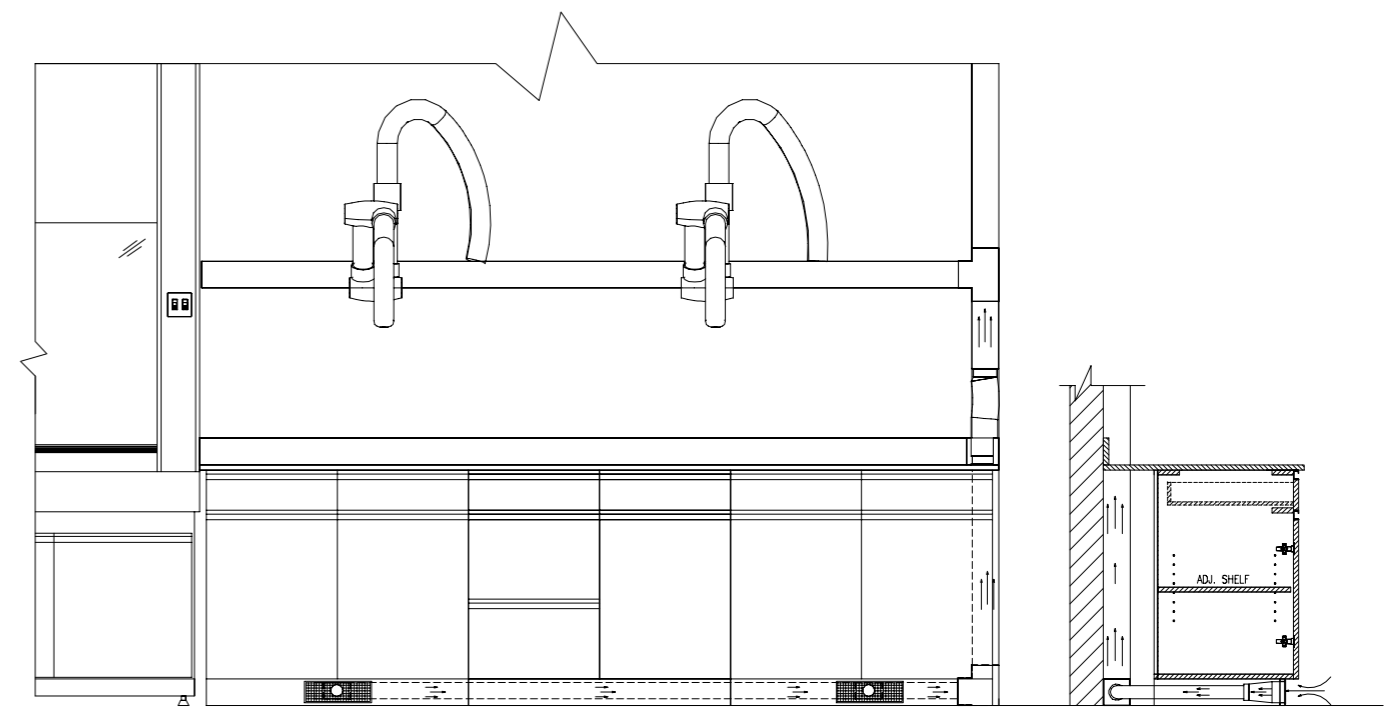




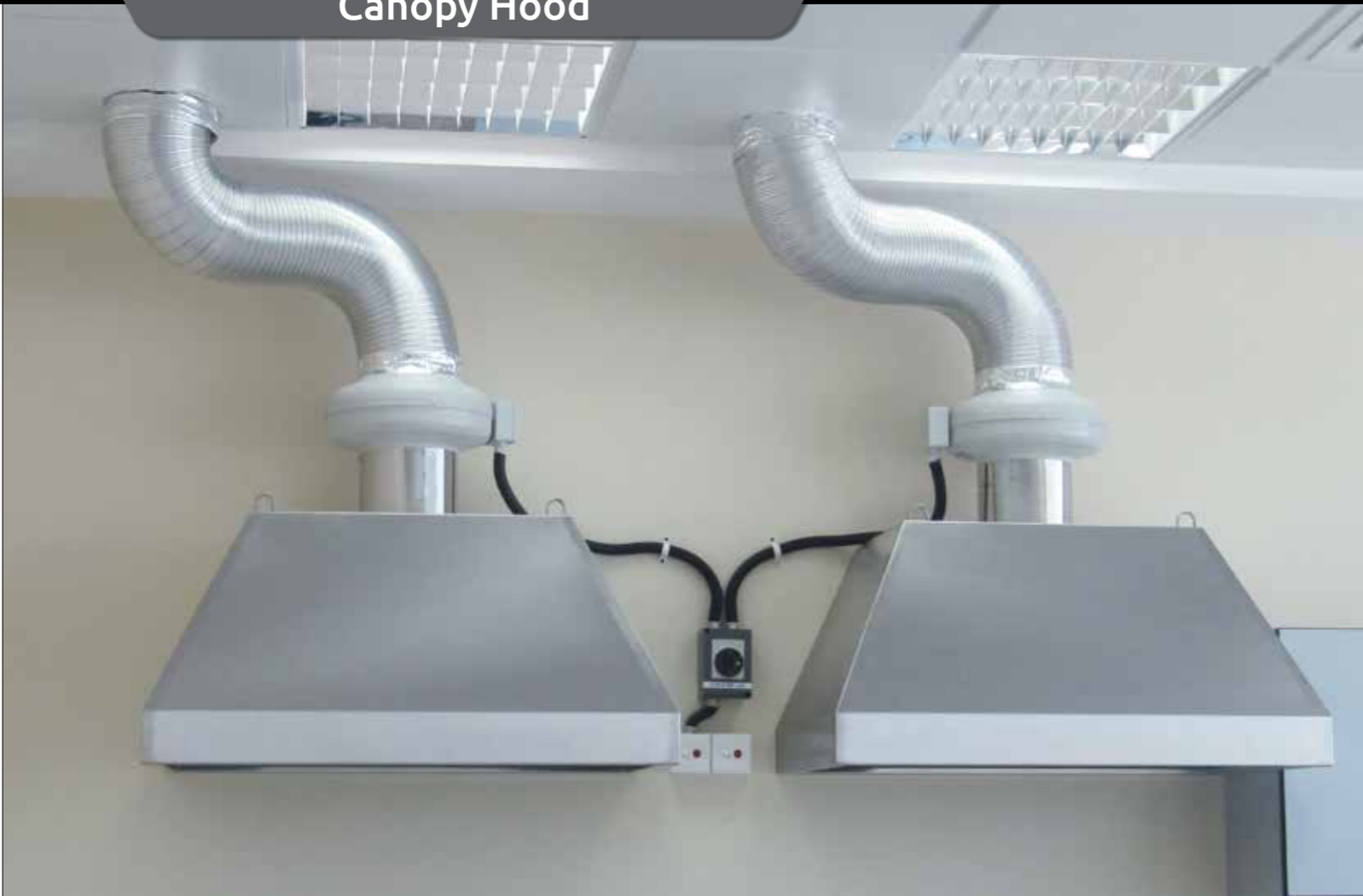


### Walk-in Fume Cupboards

The double sash assembled walk-in-fume cupboards are designed to accommodate tall testing equipments to provide high headroom and safer workplace in hazardous environment.



## Canopy Hood



Ceiling mounted and wall mounted canopy hoods.



## Suction arm



Suction Arms can be fixed on wall/ceiling/worktop with adjustable arms and suction cup. The flexible arm system shall use friction joints and ball bearing for necessary grip and easy movement.







### Worktops

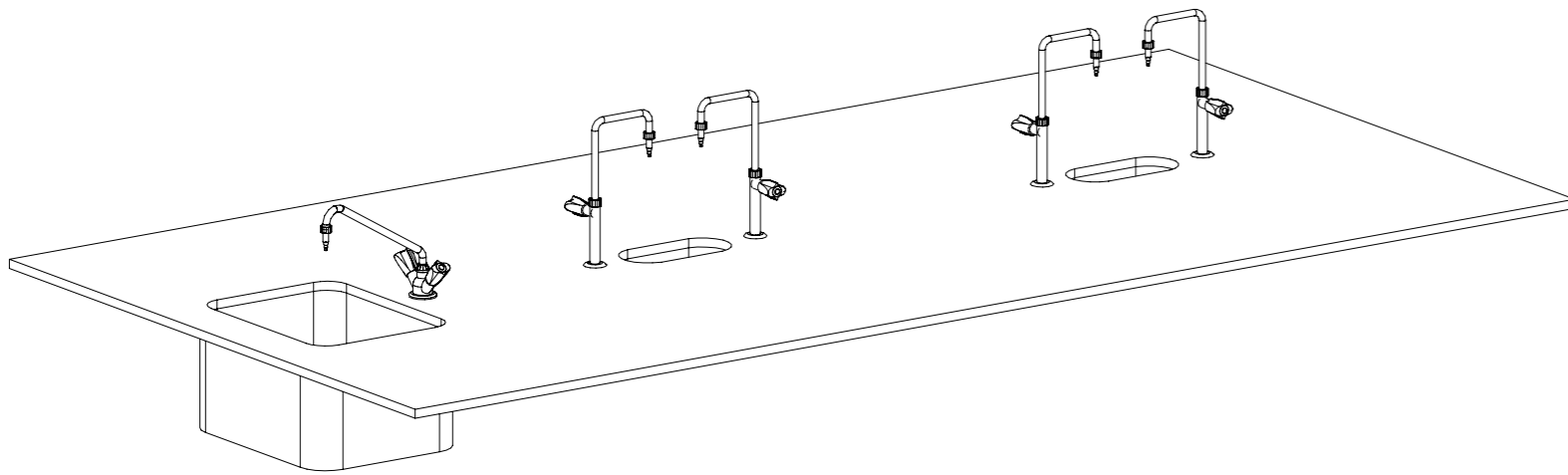
Worktops are the most used part of a laboratory furniture. Hence, it shall be selected carefully to suit the application, chemical resistance, thermal stability, impact resistance, durability, ease of sterilization, aesthetics and cost effectiveness.



### Features

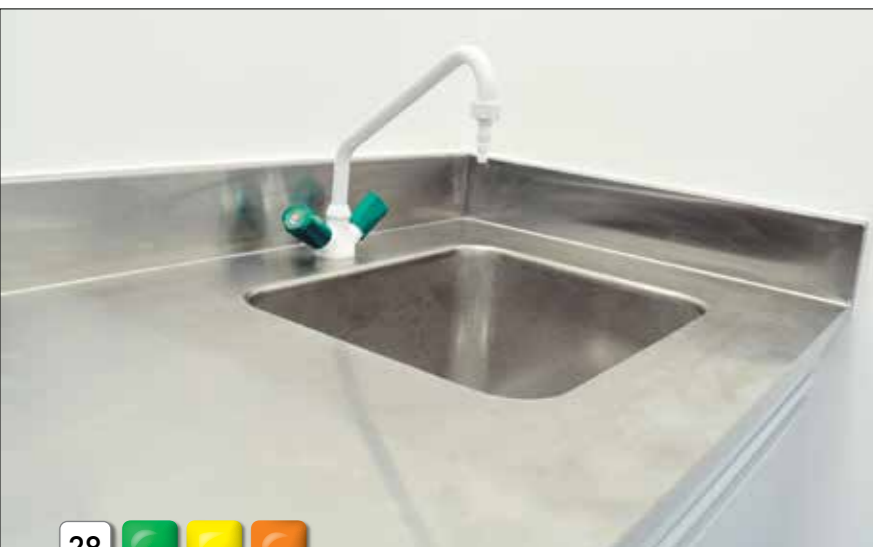
- Phenolic Resin ( Trespa )
- Epoxy Resin ( Durcon )
- Melamine laminated plywood
- Compact laminate
- Polypropylene
- Stainless steel
- Acrylic
- Ceramic worktops
- Granite
- Solid timber





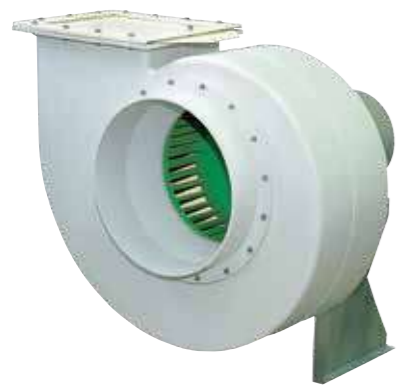
Sinks and dripcups shall be selected to match the worktop and application

Sinks	Suitable worktops
Polypropylene sink	Polypropylene, Epoxy, Phenolic resin, Acrylic Melamine laminate, Compact laminate, Granite.
Epoxy sink	Epoxy, Phenolic resin
Stainless steel sink	Stainless steel, Melamine laminate, Granite.
Ceramic sink	Ceramic worktops





## Blower & Filters



## Service Fittings



The service fittings are essential parts of workbenches to access the various utilities required in the laboratory.

- Cold water
- Hot / Cold / DM water
- Mixers
- Gases ( H<sub>2</sub>, O<sub>2</sub>, N<sub>2</sub>, He, etc. )
- Burning gases
- Vacuum
- Electricity

Service fittings are available in variants of stand-outs, drop down and wall mounted models.



People in laboratory are exposed to many occupational hazards and harmful substances. Conventional safety measures are taken in most of the places. In addition to that we offer safety fittings such as:

- Eye wash
- Emergency shower
- Safety station
- Pullout shower
- Gas leak detector
- Shut-out valve
- Sensor alarm, etc.







These tables are made with heavy structure to absorb vibrations. The Scale platforms are mounted on specially designed anti-vibration pads.

Accurate anti-vibration table provides the most stable surface for precision balances and sensitive instrument.



Tall storages provide larger storage space.

For effective utilization of the wall space above the benches, wall cabinets can be used.

The standard width of these cabinets are 45cm, 60cm, 90cm and 120cm. Storage cabinets are available as open (without doors), with panel doors or with glass infilt doors.

Wall cabinets are also available with sliding glass doors.





Gratnell Tray Units





**chemstor**  
CHEMICAL STORAGE CABINETS

A safe working environment is a primary concern in all workplaces. Laboratory staff routinely handles a variety of dangerous and health threatening substances.

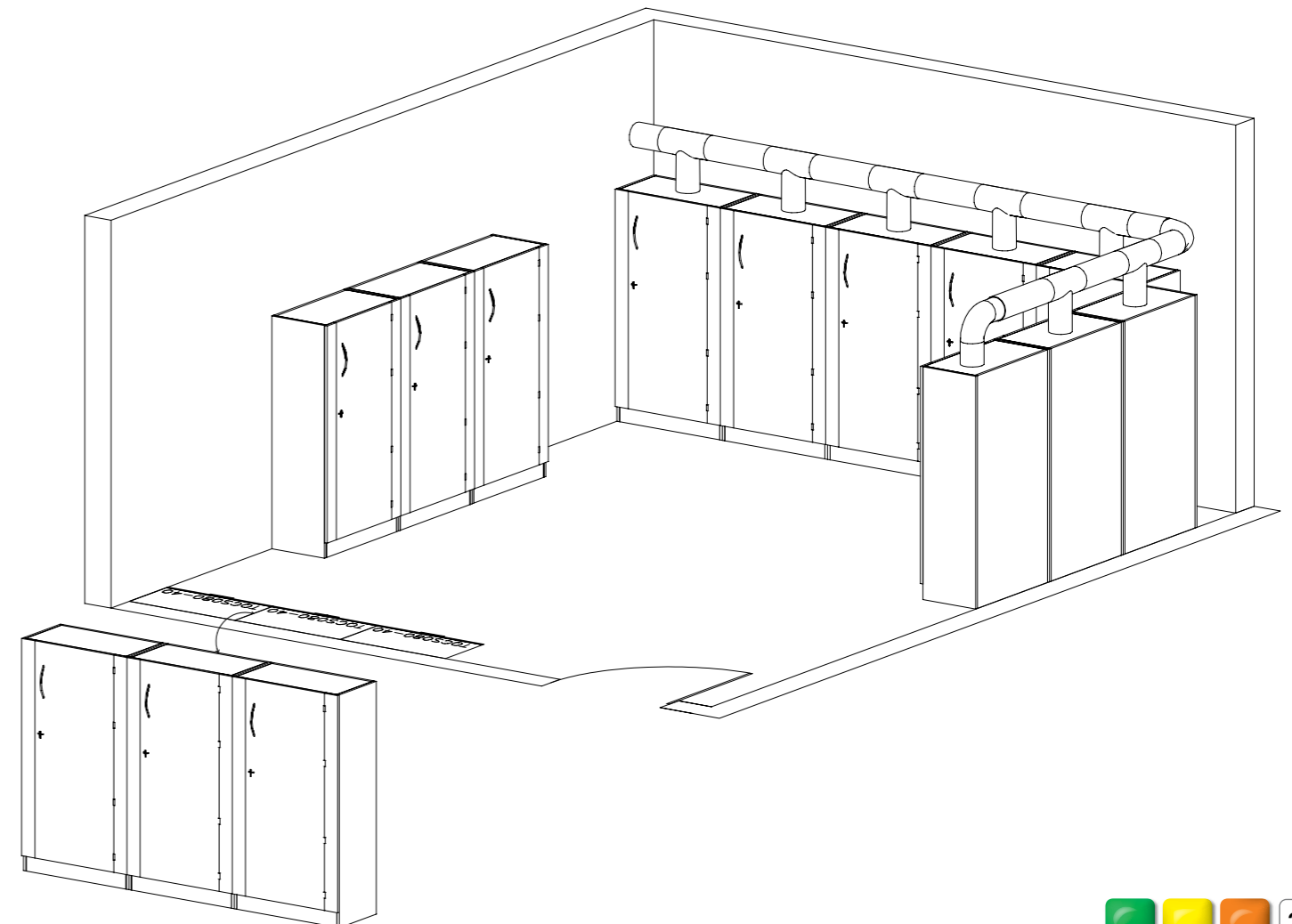
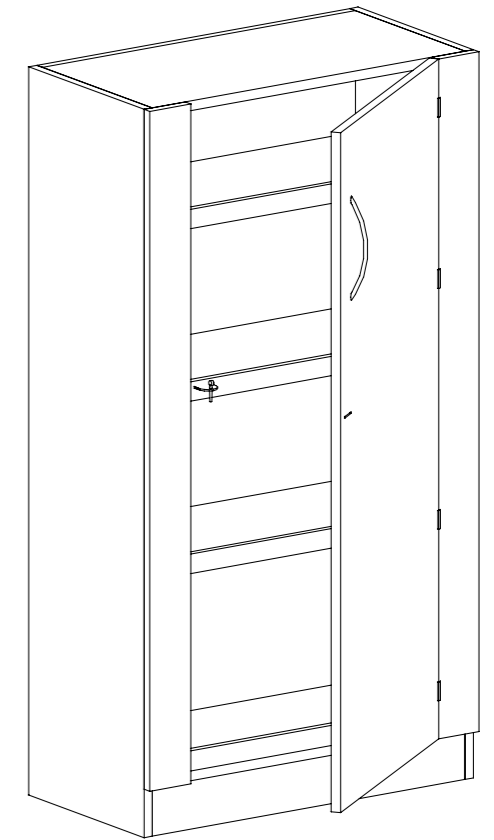
Hazardous materials must be stored safely.

Chemstor cabinets are manufactured with no exposed metals parts. Units are constructed out of acid-resistant polypropylene. All joints are thermally welded by a special process without using metal fasteners.

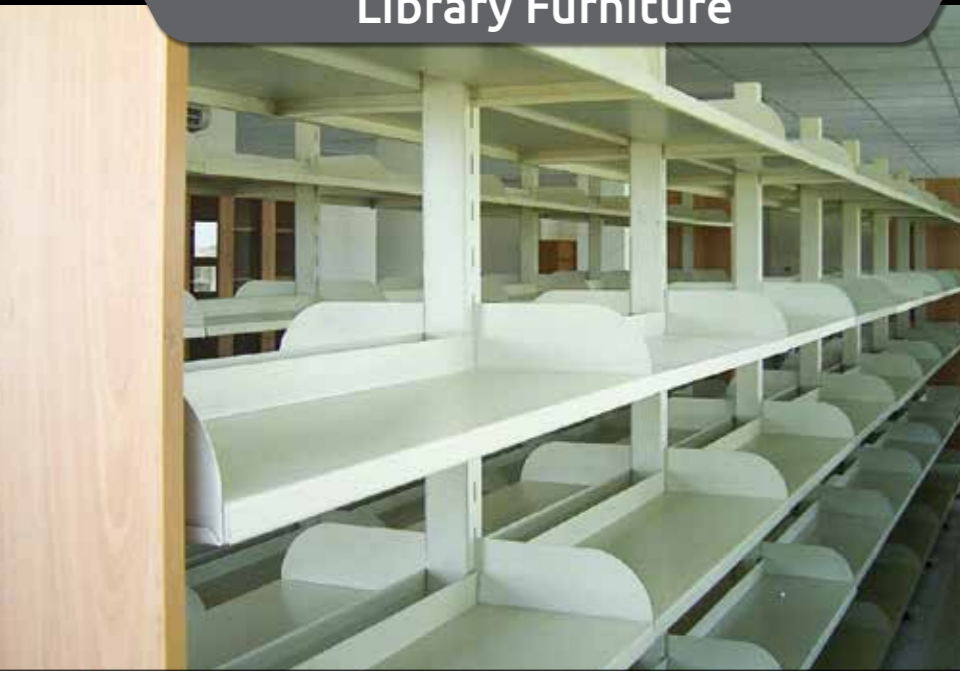


**Chemstor**

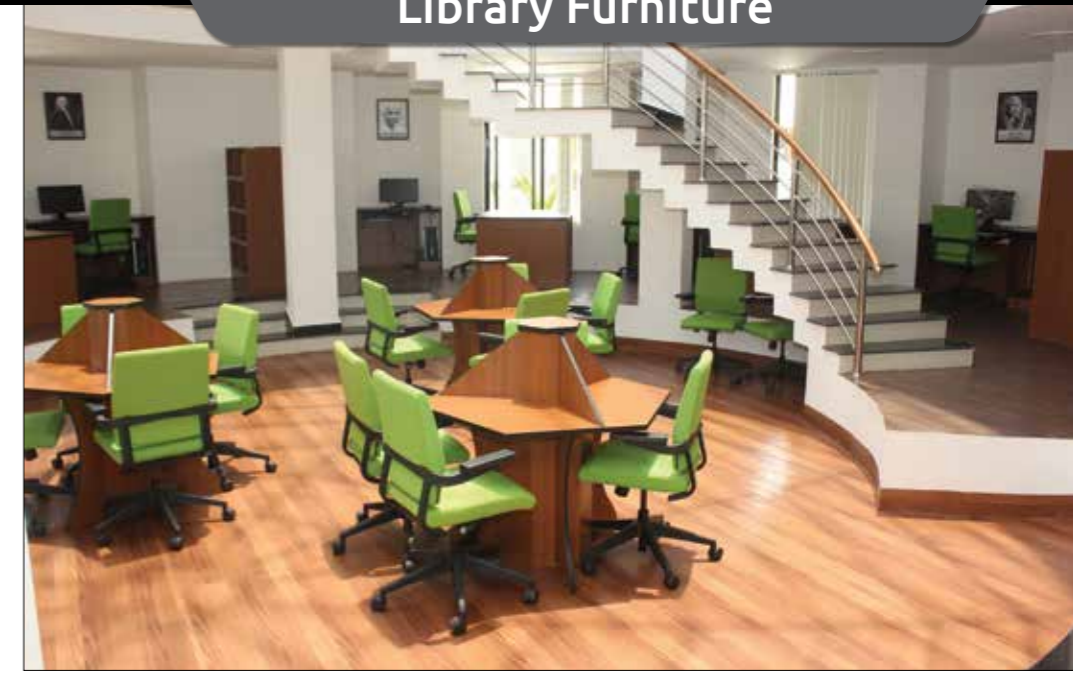
Chemstor chemical storage cabinets can be connected to an extraction system for continuous extraction of volatile gases. This is to make sure that the laboratory air is safe to breathe and environment friendly.



Library Furniture



Library Furniture





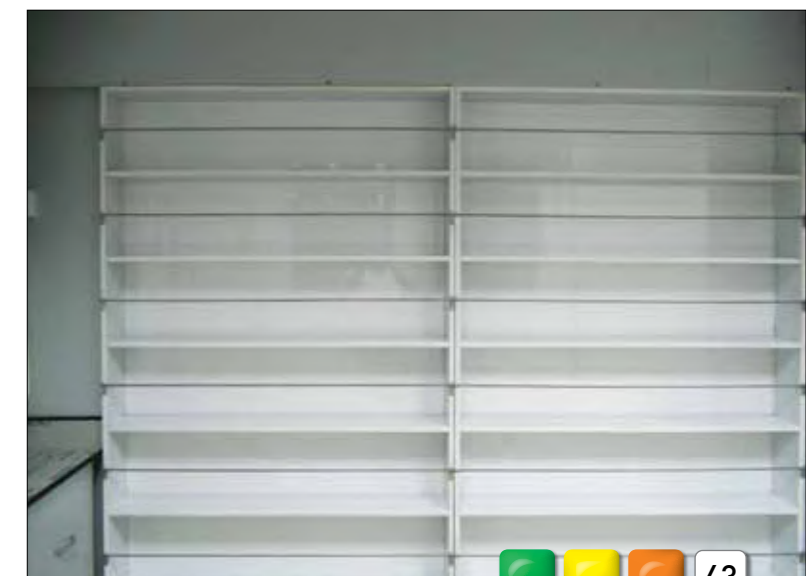
Full depth pullout cabinet



Tasting Booth

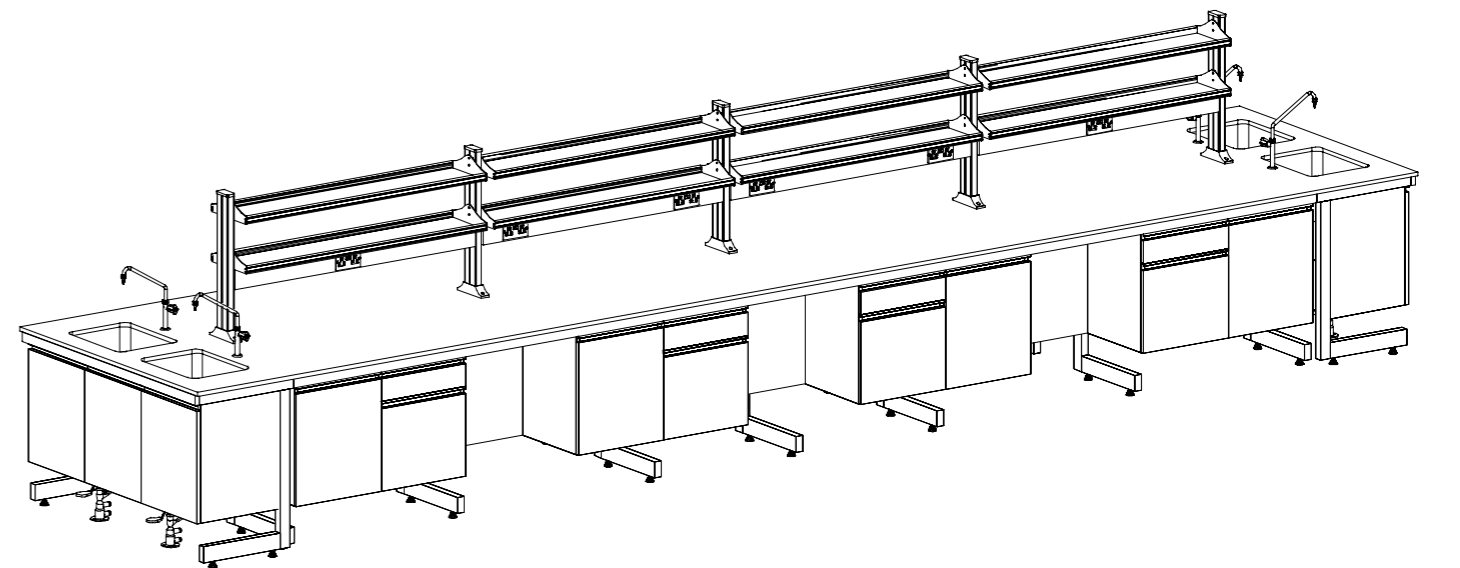


Beverages Rack





Science Lab  
Mobile Bench







### Seating

Laboratory stools & chairs provide a comfortable solution for your seating requirement :

- Height Adjustable
- With/without back support

### Trolleys







Complete Gas-line system including gas banks, cylinder cabinets, manifolds, pipelines, filters, regulators, valves, Gas leak detectors etc..







planning  
designing  
execution







Pass-Through Box



Scrub Station



Containment Booth

Changing Room



Cabinet for Disposables



### Interior Paneling

For operation theater and clean rooms

- Clean, Fast and safe.
- Bacteria resistant
- Resistant to disinfectants and cleaning agents
- Modular Construction







**Mobile Lab**

For Water / Environment monitoring, Forensics, material testing, Health Clinics, Calibration and other field services.



- Equipped with:
- Built In Laboratory Benches
  - Storage Facilities
  - Fume Extraction Systems
  - Safety & Utility Fittings
  - Refrigerator
  - Office
  - Airconditioning Systems







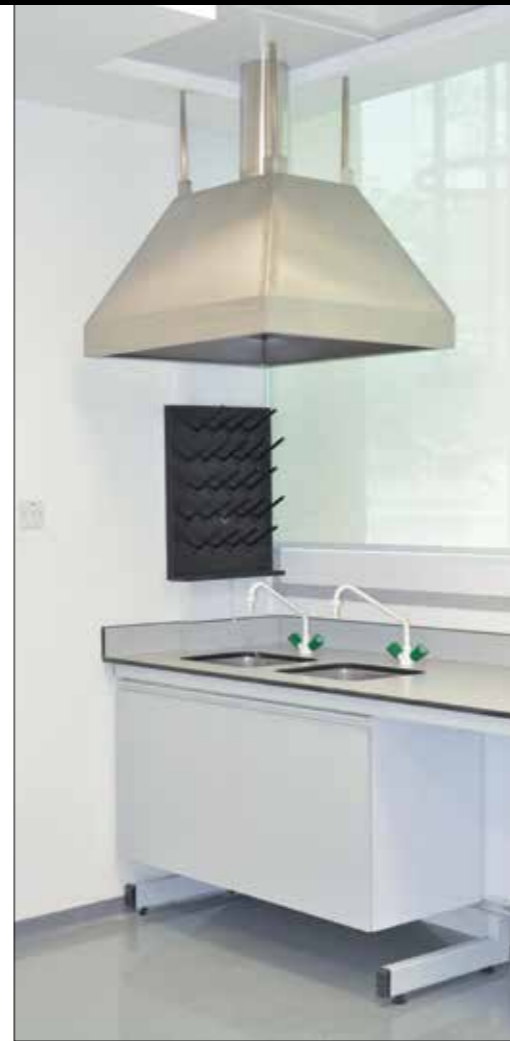




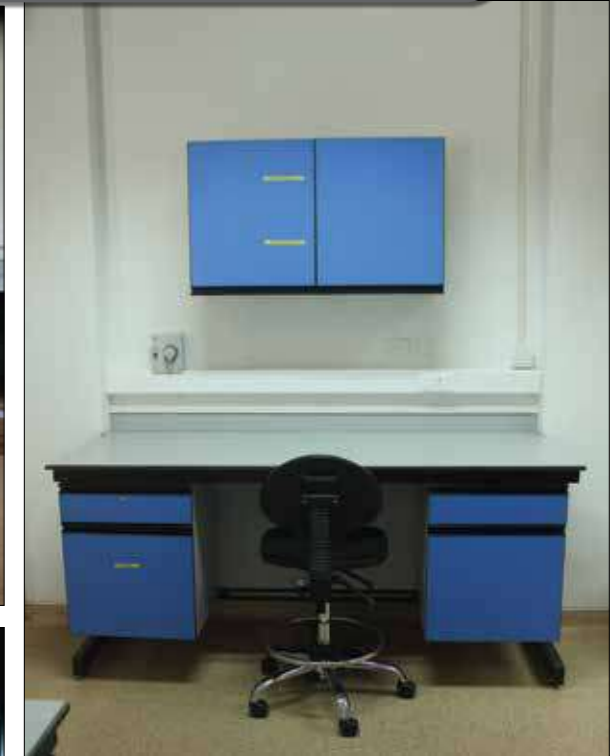




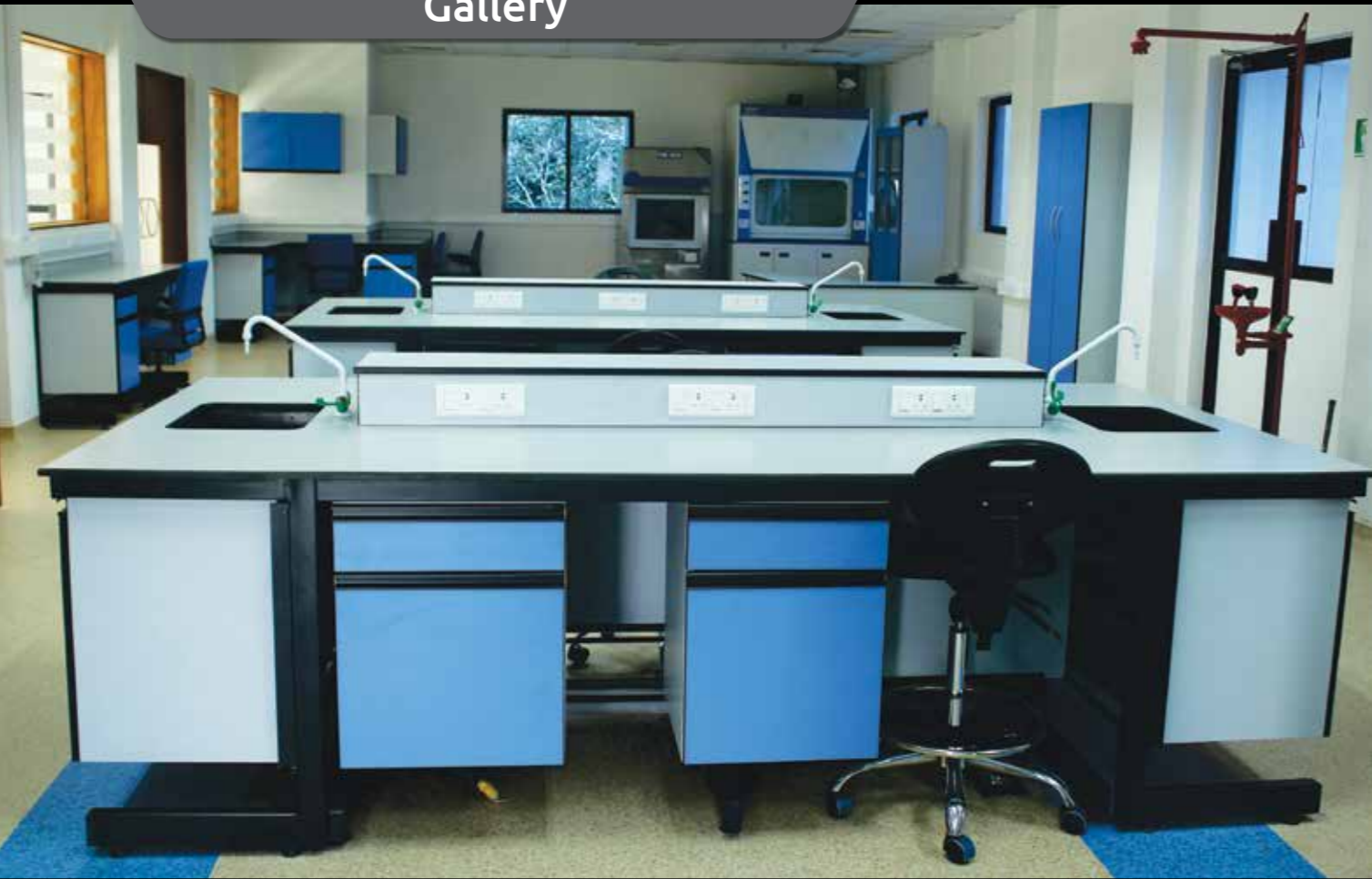








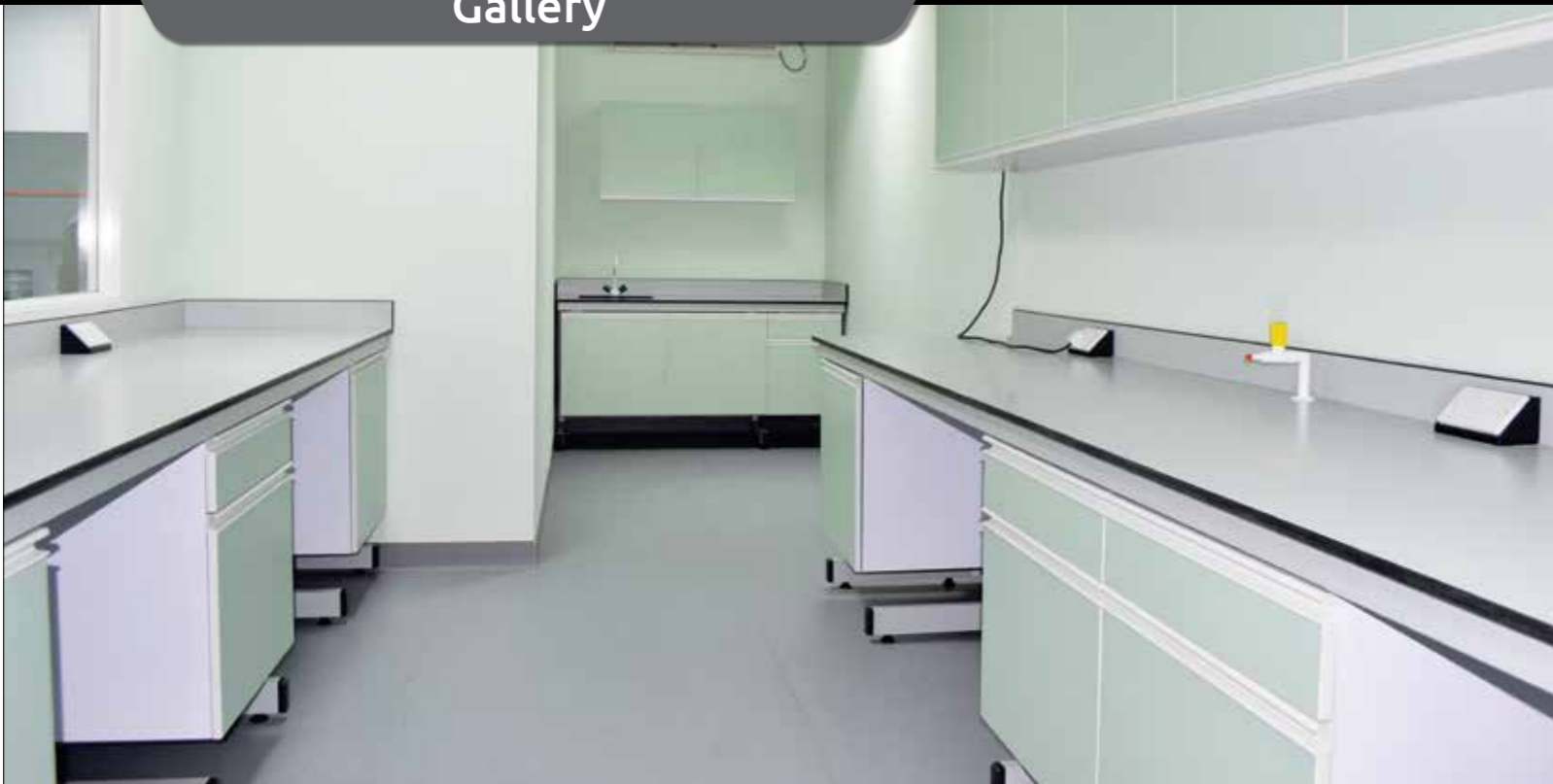












Our diversified expertise provide complete solution to our clients.

Our services also include supply and installation of

- Laboratory gas systems
- Laminar flows and microbiology safety cabinets
- Audio booths & acoustic paneling
- X-Ray room cladding
- Laboratory flooring
- Nurse stations
- Control room stations
- Vanity units
- Interior decoration

Our Technology Partners



Please note that illustration and photographs shown in this catalogue are as per our standard manufacturing specification. As a result of our continuing research and development, we may decide to alter the standard specification without prior notice. We shall provide up-to date specifications of any of these products on request.

