

FWD/HWD PRIMAX

Van-integrated



SWECO COMPLIES WITH INTERNATIONAL STANDARDS:

1. ICAO Annex 14 Volume 1 - Aerodrome - Design and Operation
2. FAA AC 150/5370-11B
3. AASHTO R32-11
4. Civil Aviation Safety Regulation: CASR Part 139 – Aerodromes

PRIMAX 150 KN 250 KN 350 KN

FALLING WEIGHT DEFLECTOMETER (FWD)

The van-integrated PRIMAX FWD from Sweco Danmark A/S is the solution when the equipment is used daily or very frequently in areas with heavy traffic and in airports, where safe and fast maneuvering is important.



Sweco attaches great importance to supplying safe and stable equipment and the newest technology forms the basis of the FWD equipment. The PRIMAX software incorporates alarms that are displayed on the computer screen. If the operator ignores vital warnings, certain functions cannot be performed with the FWD e.g. in connection with pavement temperature measuring. The equipment cannot be driven to

another position with the loading plate down and strategically placed emergency switches allows the operator to stop the equipment at any time while operating manually.

The van-integrated PRIMAX FWD is well suited for measuring in towns and densely populated areas, areas with a heavy traffic load or in areas where safe, accurate and quick manoeuvre is required, such as airports, and when meas-

uring concrete plates. The van-integrated FWD equipment may be driven at normal driving pace and the clear and good view from the van while testing offers optimum road safety.



No tools are needed for replacement or removal of weights. Multi-step adjustable drop height secures very accurate load configurations.



The geophones are easily accessible and simple to replace.



The four-split loading plate allows good contact to the surface and accurate measuring.

THE MOBILE LABORATORY


The FWD unit is well protected in the van and leaves room for further equipment or even a small laboratory. Another possibility is to bring along the portable FWD, PRIMA100 Light Weight Deflectometer. The combination of the traditional FWD equipment and the PRIMA100 LWD allows in-situ quality control in connection with rehabilitation of pavements or new constructions.

Like all FWD equipment from Sweco Danmark A/S, the standard van-integrated FWD is supplied with personal computer, Windows FWD software, time history module, transport lock, DMI (Distance Meter Indicator) integrated in the software, three temperature sensors, four-split loading plate, 9-14 or even up to 16 geophones and warning lights. Additional functions can easily be added such as video or marking equipment, GPS (Geographic Positioning System), which enables presentation of data in maps or general plans of site.

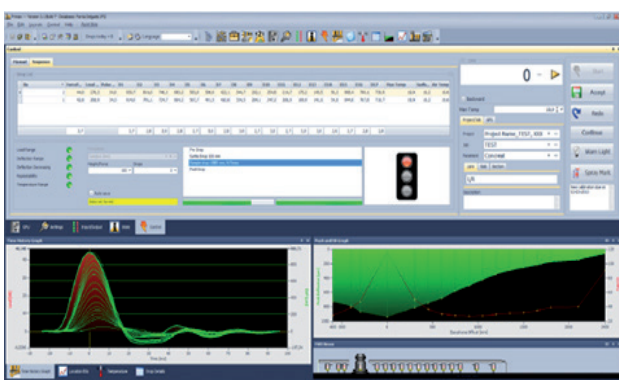
For data treatment Sweco Danmark A/S supplies RoSy DESIGN, a back-calculation software for both road and/or airport data analysis. However, files generated from the equipment can be applied in any other back-calculation program.



THE MODULAR CONCEPT



The modular principle means that there is no need for investment in new equipment if the demands on the equipment change. All that is necessary to upgrade the equipment from a standard 7-150 kN FWD to a 7-250 kN Heavy Weight Deflectometer (HWD) and even 7-350 kN Super Heavy Weight Deflectometer (SHWD) is to add more weights, a larger load cell and upgrade software.



CONTACTER:

BJARNE BYLOV JENSEN

Head of Sales & Market Dept.

T: +45 8228 1435

M: +45 2723 1435

E: Bjarnebylov.jensen@sweco.dk

YENNI MUNK ANDERSEN

Customer Service Coordinator

T: +45 8228 1565

M: +45 5372 1435

E: Yennimunk.andersen@sweco.dk

HENNY SCHØLER

Sales Support Coordinator

T: +45 8228 1481

M: +45 9137 7125

E: Henny.scholer@sweco.dk

SWECO DANMARK A/S

Kokbjerg 5

DK-6000 Kolding

T +45 8228 1400

E: pmcsale@sweco.dk

www.pavement-consultants.com